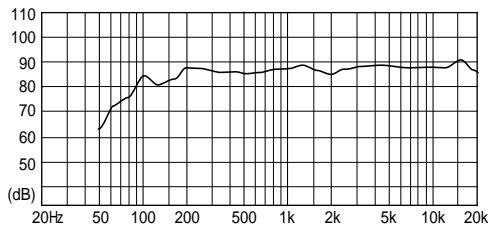
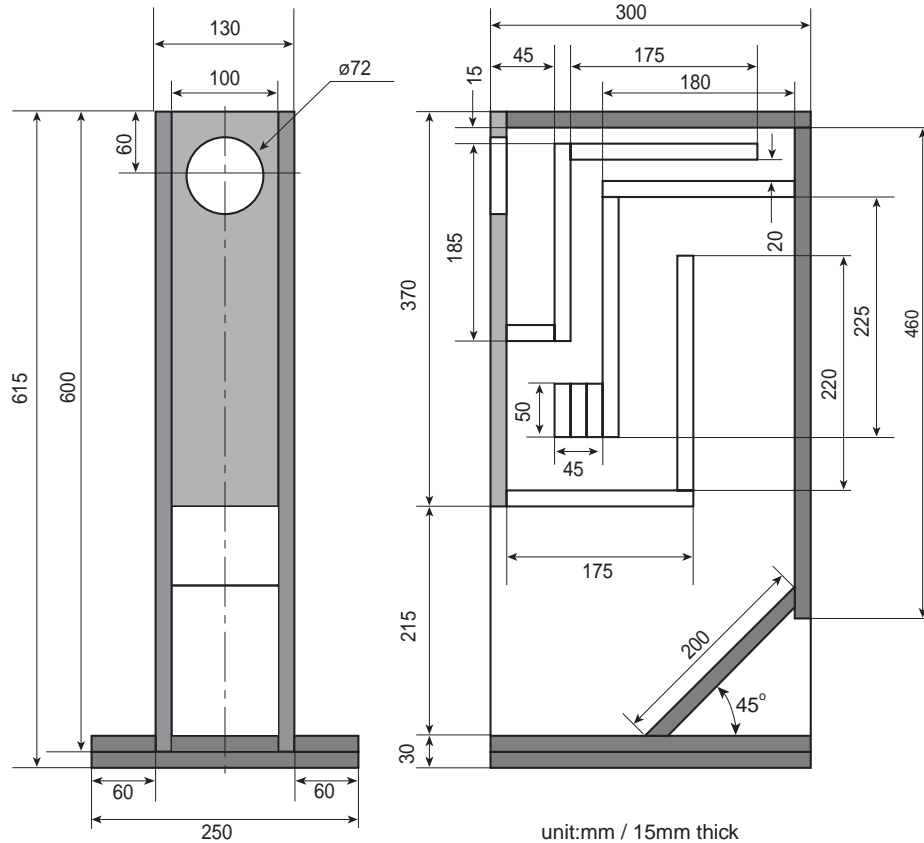


Recommended Back Loaded Horn Type Enclosure



- This example shows a back loaded horn type enclosure for FE87E.
- Simple design constructed with flat panels.
- This enclosure provides rich low frequency through the horn and mixes high/mid frequency radiated directly from the FE87E for clarity of total sound image.

Recommended Standard Bass Reflex Type Enclosure

Example of FE87E standard bass reflex type enclosure. Internal volume is 5 liters tuned to approximately 99Hz (Fb).

