

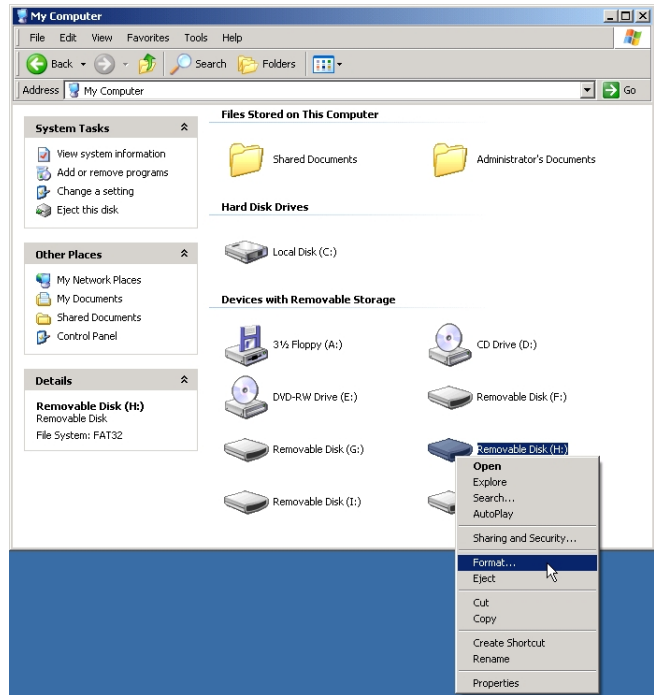
How to update HP-A8 firmware

This document explains about the procedures of updating the HP-A8 firmware. Please read thoroughly for correct firmware update.

• Formatting SD Card

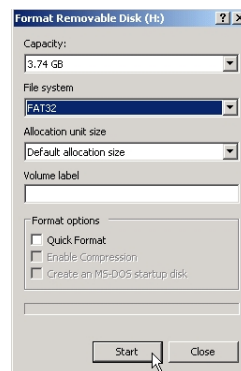
1. If there is an SD card slot on your PC / Macintosh, insert the SD card. If there is no such slot, prepare a USB card reader with the SD card slot and connect it to your PC / Macintosh USB port. Then, insert the SD card into the SD card slot in the card reader. The example on the right is the "My Computer" window which indicates that a card reader is connected to Windows XP PC. The SD card is recognized as "Removable Disk (H:)".

NOTE: An SD card that you can use on HP-A8 is the SD and SDHC card (up to 32GB capacity). Please remember that you cannot use a SDXC card with 64GB or more capacity for the firmware update purpose.



2. Right-click the SD card (Removable Disk (H:)) icon and select the "Format..." menu.

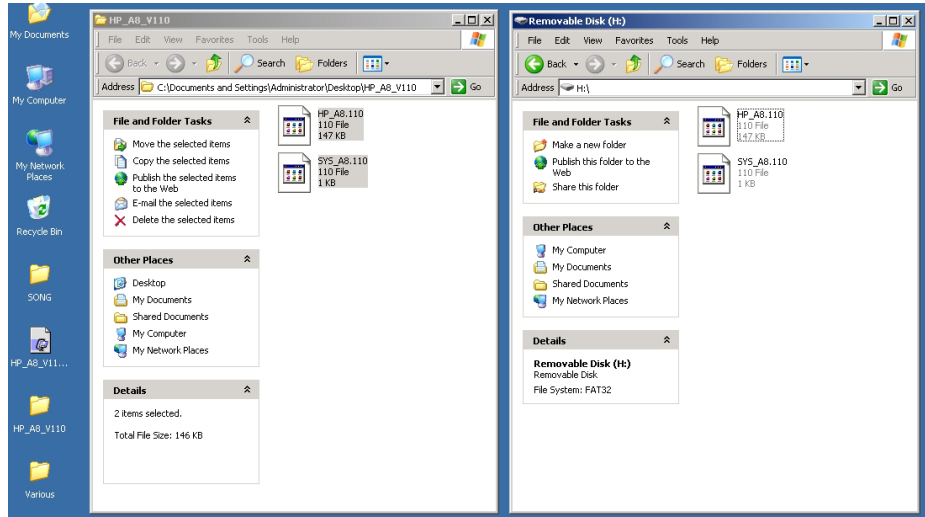
3. The "Format Removable Disk (H:) windows will appear. Select the "FAT32" file system and click the "Start" button to start formatting the SD card. If you do so, the WARNING window saying that "Formatting will erase ALL data on this disk. To format the disk, click OK. To quit, click CANCEL." will appear. Upon confirmation, click the OK button. If formatting is successfully completed, the window saying that "Format Complete." will appear. Click the OK button.



• Downloading Firmware

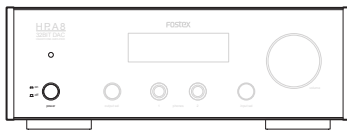
4. Download a HP-A8 firmware update file from the Fostex Company web site <www.fostex.com> onto the PC / Macintosh desktop. Since the downloaded file is zip compressed, extract it. If you do so, a folder in which two files "HP-A8.***" and "SYS_A8.***" are included will be created. The "***" section indicates the firmware version number. For example, if the firmware version is 1.10, each file name will be "HP-A8.110" and "SYS_A8.110" respectively.

5. Paste the two extracted files ("HP-A8.***" and "SYS_A8.***") onto the root directory of the SD card without creating any folders.

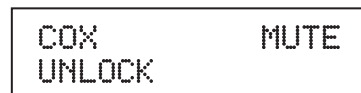


• Updating Firmware

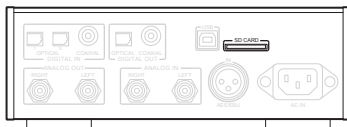
6. Turn the HP-A8 power ON.



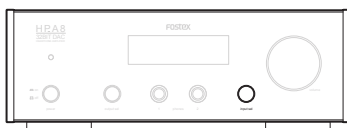
7. Rotate the INPUT select button (input sel) to set the HP-A8 input to "COX".



8. Insert the SD card in which the HP-A8 firmware update files ("HP-A8.***" and "SYS_A8.***") are included to the SD card slot located in the rear panel.



9. Press and hold the INPUT select button or press the MENU button on the remote controller to put HP-A8 into the MENU mode.



10. Rotate the INPUT select button and choose the "SYSTEM INFO" in the MENU. If you do so, the current firmware version is displayed. The example below indicates that the current firmware version is 1.00 (Ver1.00).



```
➔ SYSTEM INFO  
Ver1.00
```

11. By pressing the INPUT select button, the arrow ("➔") moves from the upper row to the lower row.



```
SYSTEM INFO  
➔ Ver1.00
```

12. In the condition that the arrow is at the lower row, rotate the INPUT select button and select the "VERSION UP" menu.



```
SYSTEM INFO  
➔ VERSION UP
```

13. Pressing the INPUT select button will initiate the firmware update. The display contents changes as follow in order.

WARNING: DO NOT POWER OFF UNTIL "VER UP COMPLETED POWER OFF" IS DISPLAYED.



```
SD CARD CHECK
```



```
VERSION UP START  
DO NOT POWER OFF
```



```
UPDATING NOW  
DO NOT POWER OFF
```



```
VER UP COMPLETED  
POWER OFF
```

14. When "VER UP COMPLETED POWER OFF" is displayed, turn the power OFF and back ON again.

15. In the same manner mentioned in the procedures 9 and 10, check if the HP-A8 firmware is correctly updated in the SYSTEM INFO menu.

```
➔ SYSTEM INFO  
Ver1.10
```