

## How to update the HP-A8C firmware

This document explains how to update the Fostex HP-A8C firmware. Thoroughly read the document to properly update the firmware.

### \* Preparing SD card

1. Prepare an SDHC card for the update (Capacity: 2GB to 32GB, preformatted with FAT32/exFAT). Then, insert the SD card to the SD card slot of Windows PC/Mac computer.
- ※ Since the HP-A8C does not recognize an SDXC card (larger than 64GB), use an SDHC card (2GB to 32GB).

### \* Firmware download and unzip

2. Download the HP-A8C firmware update file from Fostex website, <[http://www.fostexinternational.com/docs/tech\\_support/software\\_updates.shtml](http://www.fostexinternational.com/docs/tech_support/software_updates.shtml)> and place it at such a place as your desktop. Since the downloaded file is zip compressed, i.e., file name: HPA8\_\*\*\*.zip (firmware version: \*.\*), unzip the file. Upon unzipping the file, there will be following two files appeared;

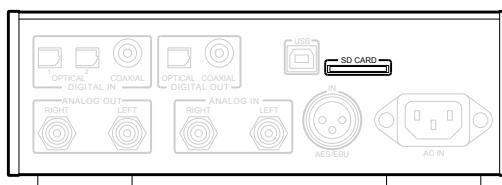
“HP\_A8.\*\*\*”  
 “SYS\_A8.\*\*\*”  
 (firmware version: \*.\*).



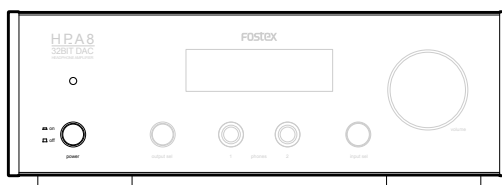
Copy these two files together into the SD card, which you inserted to the SD card slot with the procedure #1 above. The screen shot on the upper right shows an example of firmware version V3.10 update file copied in the first tree (root directory) of SDHC card (8GB) mounted onto Windows 8.1 PRO PC (64bit version).

### \* Firmware update procedures

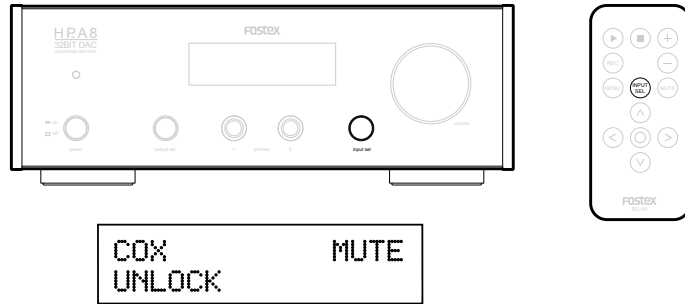
3. Insert the SD card, which already has the firmware update files (“HP\_A8.\*\*\*” and “SYS\_A8.\*\*\*”), into the SD card slot of the HP-A8C rear panel.



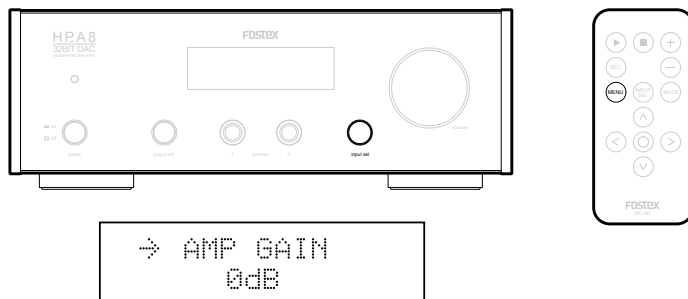
4. Power ON the HP-A8C.



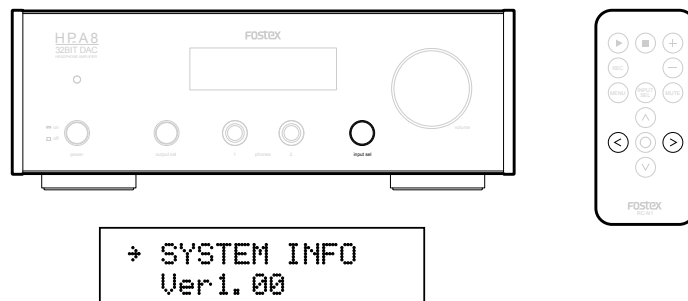
- Choose the input source as “COX” by either rotating the [input sel] knob on the HP-A8C or pressing the “INPUT SEL” button on the remote controller.



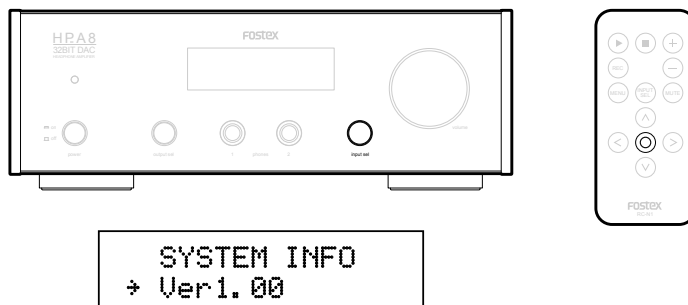
- Enter into the MENU mode of HP-A8C by either press and holding the [input sel] knob on the HP-A8C or pressing the “MENU” button on the remote controller. Under this condition, the display shows the “AMP GAIN” menu.



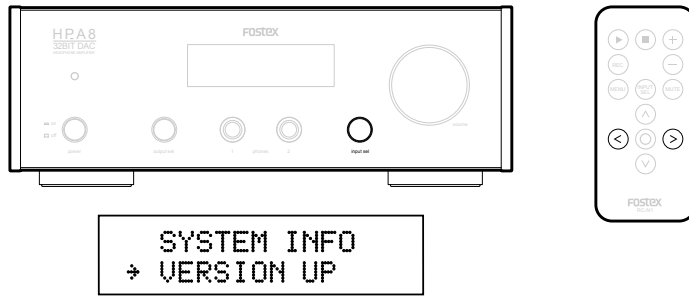
- Choose the “SYSTEM INFO” menu by either rotating the [input sel] knob on the HP-A8C or pressing the right or left arrow key on the remote controller. The display will now show the current firmware version. Under this condition, the arrow “→” is blinking on the upper line in the display.



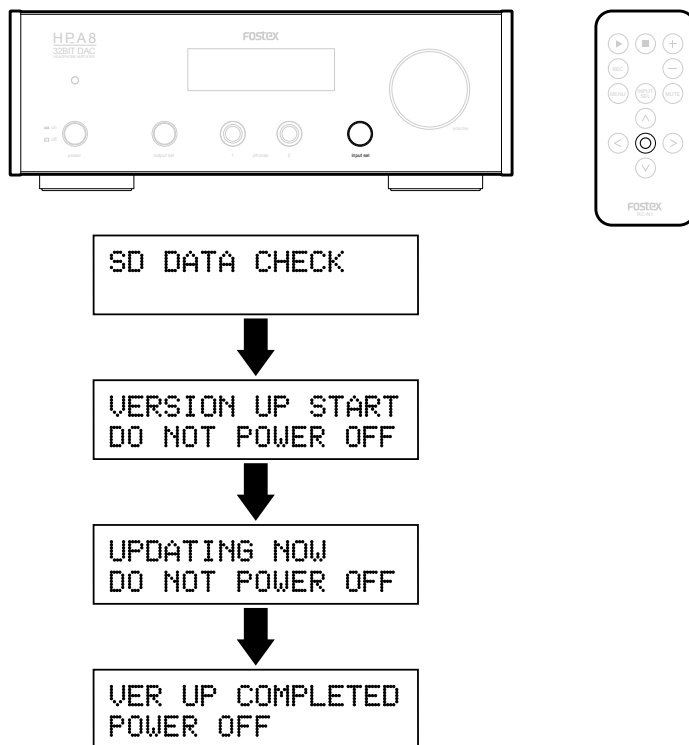
- Move the blinking arrow “→” to the lower line by either pressing the [input sel] knob on the HP-A8C or pressing the ENTER key on the remote controller.



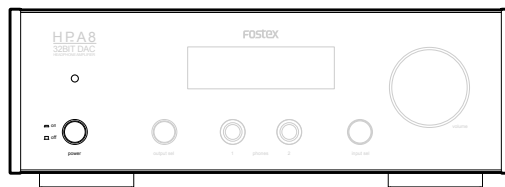
9. Choose the “VERSION UP” menu by either rotating the [input sel] knob on the HP-A8C or pressing the right or left arrow key on the remote controller.



10. The HP-A8C will start updating its firmware by pressing the [input sel] knob on the HP-A8C or pressing ENTER key on the remote controller. The display will show the following sequence.



11. When the “VER UP COMPLETED POWER OFF” message is displayed, power OFF once then ON again.



12. Enter the HP-A8C into the MENU mode by either press and holding the [input sel] knob on the HP-A8C or pressing the MENU button on the remote controller. Then, choose the “SYSTEM INFO” menu by rotating the [input sel] knob on the HP-A8C or pressing the right or left arrow key on the remote controller to ensure if the firmware update has correctly done. (These procedures are the same as described above in the item #6 and #7). The example below shows that the firmware version is updated to “1.10”. Now the firmware update is completed.

